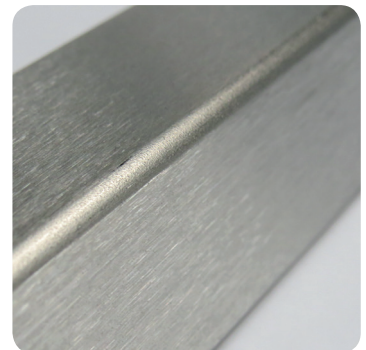


# Q-FIN



## FIERDE 2 STATIONS

The Fierde is a deburring machine especially designed for processing small workpieces with a width up to 200 mm. The Fierde features a brush height tracking system designed by Q-fin. Because of this, the Fierde is an easy to operate machine.

Q-fin. Deburring, grinding and rounding



## FIERDE 2 STATIONS

### TREATMENT

- Stainless steel
- Aluminum
- Steel

### DESCRIPTION

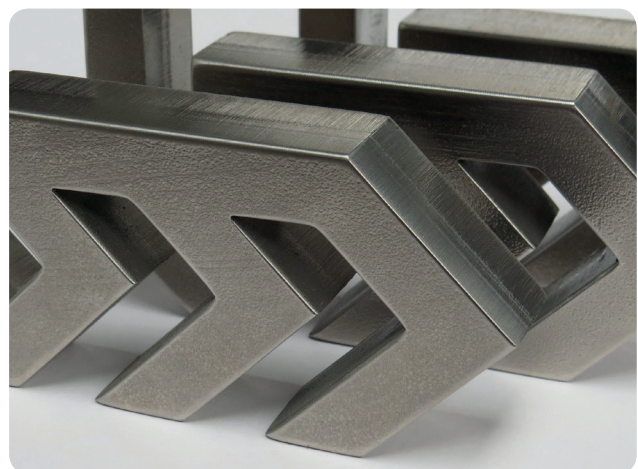
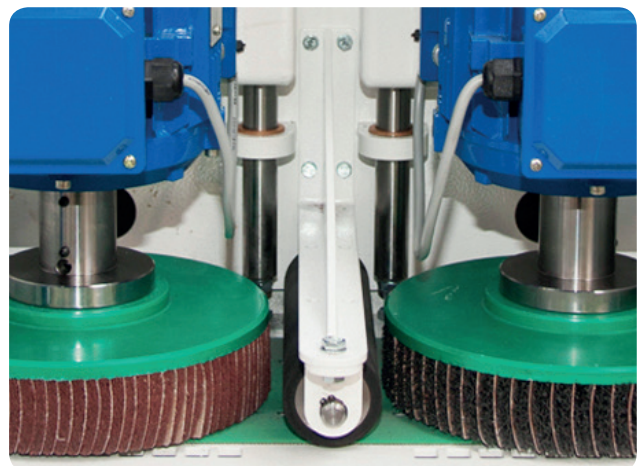
Typically, the Fierde is equipped with continuously adjustable speed for the conveying table and the grinding and/or brush head. This makes it possible to perform all treatments imaginable and realize results. Also, by default the Fierde is equipped with a vacuum or magnet system in the conveying table. This way, smaller workpieces are processed safely, easily and trouble free.

### THE FIERDE IS AVAILABLE:

- For optimal deburring and rounding - Sanding belt – Brush edition.
- For a perfect rounding - Brush – Brush edition.
- For the perfect finish of strips, extrusions and workpieces - Sanding belt – Sanding belt edition.

### TECHNICAL SPECIFICATIONS

- Conveyor belt is frequency controlled 1.2 – 10 meters per minute.
- Vacuum system with 2.2 kW pump.
- Brush engines are frequency controlled 0.75 – 2.2 kW.
- Electrically adjustable height with digital read-out.  
Workpiece thickness limit 85 mm.
- Connected load machine 400 V, 50 Hz, 10 KW, 25 Amp.
- Measurements 1600 x 700 x 2200 mm (L x W X H).
- Weight 700 kg.



Q-fin. Deburring, grinding and rounding